

LIGHT+

THE SOLUTIONS OF LED



“Korea
Technology”

LED Lighting Profesional
& Advertising LED Catalogue

PERUSAHAAN

PT. SURYA CITRA TEKNIK CEMERLANG adalah Perusahaan Swasta Indonesia (PMDN) yang didirikan pada tahun 2009 dengan bisnis utamanya adalah manufaktur peralatan listrik yaitu Lampu LED, Solar Panel, Power Supply, Running Text dan LED Videotron yang disiapkan untuk pasar nasional dan internasional.

Dikenal dengan Merk **LIGHT+** kami sangat mengedepankan kualitas, kehandalan dan ketahanan dengan melalui metode uji yang telah memenuhi standar.

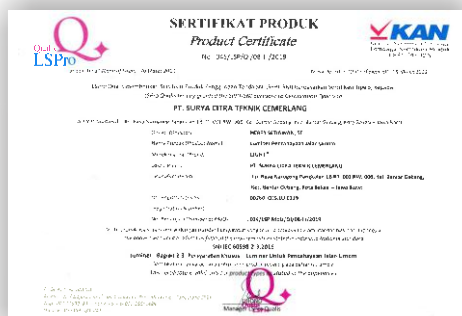
VISI :

“ MELANGKAH PASTI DAN USAHA TIADA HENTI “

MISI :

Menjadi salah satu perusahaan penghasil komponen listrik terkemuka di Indonesia yang mengutamakan kepuasan pelanggan dengan menjaga mutu & kualitas pekerjaan, keselamatan & kesehatan kerja serta lingkungan.

SERTIFIKASI SNI & ISO





LED Bulbs 5W

Tegangan : 70 ~ 285 VAC
 Daya : 5W
 Model : LPB05
 LPBD05 (Dimmable)
 Frekuensi : 50 ~ 60 Hz
 Power Factor : ≥ 0.70
 Power Efisiensi : $\geq 90\%$
 LED Efisiensi : ≥ 110 lm/Watt
 LED Lifetime : 50.000 jam
 CCT : 2700 ~ 3000K



LED Bulbs 10W

Tegangan : 70 ~ 285 VAC
 Daya : 10W
 Model : LPB10
 LPBD10 (Dimmable)
 Frekuensi : 50 ~ 60 Hz
 Power Factor : ≥ 0.70
 Power Efisiensi : $\geq 90\%$
 LED Efisiensi : ≥ 110 lm/Watt
 LED Lifetime : 50.000 jam
 CCT : 2700 ~ 3000K



LED Bulbs 15W

Tegangan : 70 ~ 285 VAC
 Daya : 15W
 Model : LPB15
 LPBD15 (Dimmable)
 Frekuensi : 50 ~ 60 Hz
 Power Factor : ≥ 0.70
 Power Efisiensi : $\geq 90\%$
 LED Efisiensi : ≥ 110 lm/Watt
 LED Lifetime : 50.000 jam
 CCT : 2700 ~ 3000K



Dimensi

Model	Lebar	Tinggi
LPB05	550mm	115mm
LPB10	550mm	118 mm
LPB15	670mm	135 mm

LED BULBS EMERGENCY SERIES



LED Bulbs Combo 12W

Tegangan : 70 ~ 285 VAC
 Daya : 12W
 Model : CMB12
 CCT : 2700 ~ 3000K (WarmWhite)
 6000 ~ 6500K (White)
 Daya Baterai : 5 Jam
 Berat : 225 gram



LED Bulbs Combo 5W

Tegangan : 70 ~ 285 VAC
 Daya : 5W
 Model : CMB05
 CCT : 2700 ~ 3000K (WarmWhite)
 6000 ~ 6500K (White)
 Daya Baterai : 10 Jam
 Berat : 95 gram



Dimensi

Model	Lebar	Tinggi
CMB05	550mm	115mm
CMB12	680mm	138mm

LED TUBE / LED TUBES EMERGENCY

LED Tubes T5

Tegangan : 70 ~ 285 VAC
 Daya : 7W, 17W
 Model : ST60, ST120
 Frekuensi : 50 ~ 60 Hz
 Power Factor : ≥ 0.90
 Power Efisiensi : $\geq 90\%$
 LED Efisiensi : ≥ 110 lm/W
 LED Lifetime : 50.000 jam
 CCT : 2700 ~ 3000K (WarmWhite)
 6000 ~ 6500K (White)



Dimensi

Model	Panjang	Lebar	Tinggi	Berat
ST60	600mm	22mm	30mm	105gram
ST120	1200mm	22mm	30mm	210gram

LED Tubes T8

Tegangan : 70 ~ 285 VAC
 Daya : 9W, 18W
 Model : SE60, SE120
 Frekuensi : 50 ~ 60 Hz
 Power Factor : ≥ 0.90
 Power Efisiensi : $\geq 90\%$
 LED Efisiensi : ≥ 110 lm/W
 LED Lifetime : 50.000 jam
 CCT : 2700 ~ 3000K (WarmWhite)
 6000 ~ 6500K (White)



Dimensi

Model	Panjang	Lebar	Tinggi	Berat
SE60	600mm	30mm	30mm	125gram
SE120	1200mm	30mm	30mm	235gram



LED Tubes Combo All in one

Tegangan : 70 ~ 285 VAC
 Model : CMT8-60A (60cm)
 CMT8120A (120cm)
 CCT : 2700 ~ 3000K (WarmWhite)
 6000 ~ 6500K (White)
 Daya Baterai : 5 Jam



LED Tubes T8 Combo

Tegangan : 70 ~ 285 VAC
 Model : CMT8-60 (60cm)
 CMT8-120 (120cm)
 CCT : 2700 ~ 3000K (WarmWhite)
 6000 ~ 6500K (White)
 Daya Baterai : 3 - 4 Jam



Dimensi

Model	Panjang	Lebar	Tinggi	Berat
CMT8-60	600mm	28mm	27mm	210gram
CMT8-120	1200mm	30mm	37mm	405gram
CMT8-60AP	600mm	30mm	31mm	255gram
CMT8-120AP	1200mm	27mm	30mm	350gram
SE120RP	1200mm	27mm	30mm	270gram

LED Tubes T8 Microwave Sensor

Tegangan : 70 ~ 285 VAC
 Daya : 9W, 18W
 Model : SE60R, SE120R
 Sistem : Power Off / Power Dimmable
 Timer : 15s, 30s, 60s, 10m (Custom)
 Sensitifitas Jarak: 6~ 8 Meter
 Color : 2700 ~ 3000K (WarmWhite)
 6000 ~ 6500K (White)
 Power Factor : ≥ 0.90
 Power Efisiensi : $\geq 90\%$
 LED Efisiensi : ≥ 110 lumens/watt



EMERGENCY SERIES



EMERGENCY CAT EYE

Tegangan	: 70 ~ 285 VAC
Daya	: 4W
Model	: EMR25
Lumen	: 120 lm/Watt
Warna	: 2700 ~ 3000K (Warm White) 6000 ~ 6500K (White)
Berat	: 695Gram
Dimensi	: 268 x 640 x130 x117mm
Daya Baterai	: 1 Baterai 3 Jam / Maksimal Paralel Baterai 10 (Custom)



EMERGENCY EXIT

Tegangan	: 110 - 240V, 50/60Hz
Daya	: 0.56W
Daya Baterai	: 1 Baterai 3 Jam
Pemasangan	: Hanging
Material	: Glass + Aluminium Shell
Baterai	: 1.2 V 900 mAh NI-CD Battery
Dimensi	: 350 x 250 x 145mm
Berat	: 240 Gram





LED Corn Light

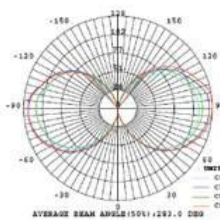
- Tegangan : 70 ~ 285 VAC
- Daya : 10W, 16W, 36W (Dimmable Support)
- Model : NSC10, NSC16, PC36
- Color : 2700 ~ 3000K (WarmWhite)
6000 ~ 6500K (White)
- Frekuensi : 50 ~ 60 Hz
- Power Factor : ≥ 0.90
- Power Efisiensi : $\geq 90\%$
- LED Efisiensi : ≥ 120 lumens/watt
- LED Lifetime : 50.000 jam



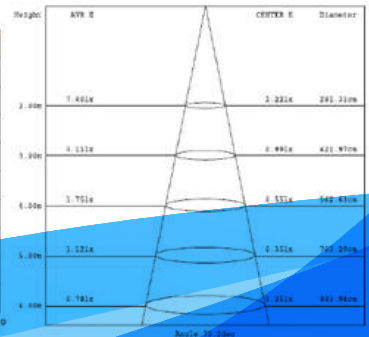
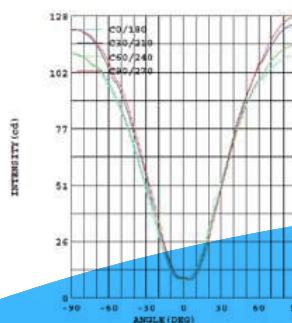
Dimensi

Model	Panjang	Tinggi	Diameter	Berat
NSC10	45mm	140mm	45mm	65gram
NSC16	55mm	177mm	55mm	140gram
PC36	85mm	235mm	85mm	585gram

LUMINOUS INTENSITY DISTRIBUTION



LUMINOUS INTENSITY DISTRIBUTION



LED SPOT/ LED COB LIGHT SERIES

LED Spot Light

Tegangan : 70 ~ 285 VAC
 Daya : 3W, 5W, 7W, 12W
 (Dimmable Support)
 Model : SP03, SP05, SP07, SP12
 Color : 2700 ~ 3000K (WarmWhite)
 6000 ~ 6500K (White)
 Frekuensi : 50 ~ 60 Hz
 Power Factor : ≥ 0.90
 Power Efisiensi : $\geq 90\%$
 LED Lifetime : 50.000 jam



Model	Diameter	Tinggi	Cut Hole	Berat
SP03	Ø85mm	40mm	Ø52mm	120gram
SP05	Ø104mm	40mm	Ø75mm	205gram
SP07	Ø104mm	40mm	Ø74mm	210gram
SP12	Ø138mm	37mm	Ø98mm	285gram

LED Down Light COB

Tegangan : 70 ~ 285 VAC
 Daya : 5W, 9W, 15W, 20W
 (Dimmable Support)
 Model : SPCB03, SPCB04, SPCB05
 SPCB06
 Color : 2700 ~ 3000K (WarmWhite)
 6000 ~ 6500K (White)
 Frekuensi : 50 ~ 60 Hz
 Power Factor : ≥ 0.90
 Power Efisiensi : $\geq 90\%$
 LED Lifetime : 50.000 jam



LED Candle Light

Tegangan : 70 ~ 285 VAC
 Daya : 4W
 Model : FLC04P, FLC04K
 Color : 2700 ~ 3000K (WarmWhite)
 6000 ~ 6500K (White)
 Frekuensi : 50 ~ 60 Hz
 Power Factor : ≥ 0.4
 Power Efisiensi : $\geq 90\%$
 LED Efisiensi : ≥ 120 lumens/watt
 LED Lifetime : 50.000 jam



Model	Diameter	Tinggi	Cut Hole	Berat
SPCB03	Ø85mm	53mm	Ø52mm	130gram
SPCB04	Ø103mm	53mm	Ø55mm	210gram
SPCB05	Ø137mm	60mm	Ø95mm	320gram
SPCB06	Ø190mm	50mm	Ø124mm	405gram
Sp15	Ø130mm	90mm	Ø80mm	410gram
Sp25	Ø165mm	120mm	Ø105mm	600gram
Sp50	Ø190mm	140mm	Ø130mm	600gram

Model	Panjang	Tinggi	Diameter	Berat
FLC04	45mm	115mm	24mm	25gram



Round Panel Light

- Tegangan : 70 ~ 285 VAC
- Daya : 6W, 12W, 18W
(Dimmable Support)
- Model : SPP06, SPP12, SPP18
- Color : 2700 ~ 3000K (Warm White)
6000 ~ 6500K (White)
- Frekuensi : 50 ~ 60 Hz
- Power Factor : ≥ 0.90
- Power Efisiensi : $\geq 90\%$
- LED Efisiensi : ≥ 100 lumens/watt
- LED Lifetime : 50.000 jam

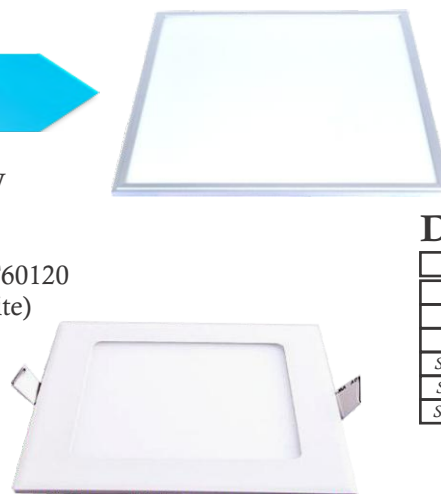


Dimensi

Model	Diameter	Tinggi	Cut Hole	Berat
SPP06	Ø120mm	20mm	Ø75mm	120gram
SPP12	Ø170mm	20mm	Ø127mm	170gram
SPP18	Ø225mm	20mm	Ø175mm	360gram

Square Panel Light

- Tegangan : 70 ~ 285 VAC
- Daya : 6W, 12W, 18W, 36W, 72W
(Dimmable Support)
- Model : SPR06, SPR12, SPR18,
SPT6060, SPT30120, SPT60120
- Color : 2700 ~ 3000K (Warm White)
6000 ~ 6500K (White)
- Frekuensi : 50 ~ 60 Hz
- Power Factor : ≥ 0.90
- Power Efisiensi : $\geq 90\%$
- LED Efisiensi : ≥ 100 lumens/watt
- LED Lifetime : 50.000 jam



■
■
■
3Warna Bisa Dirubah Menjadi
 SPT6060, SPT30120, SPT60120



Dimensi

Model	Panjang	Lebar	Tinggi	Cut Hole	Berat
SPR06	120mm	120mm	20mm	78x78mm	145gram
SPR12	170mm	170mm	20mm	122x122mm	325gram
SPR18	225mm	225mm	20mm	173x173mm	535gram
SPT30120	1200mm	300mm	10mm	250x1150mm	2670gram
SPT6060	600mm	600mm	10mm	555x555mm	2670gram
SPT60120	1200mm	600mm	10mm	1550x530mm	5550gram

LED BEAN GALLBLADDER SERIES



Dimensi

Model	Panjang	Lebar	Tinggi	Cut Hole	Berat
Bg16	228mm	188mm	35mm	75x75mm	465gram
Bg30	273mm	160mm	110mm	90x90mm	675gram

- Tegangan : 70 ~ 285 VAC
Daya : 16W (8W*2), 30W (15*2)
Model : BG16, BG30
Color : 2700 ~ 3000K (WarmWhite)
6000 ~ 6500K (White)
Beam Angel : 24
Frekuensi : 50 ~ 60 Hz
Power Factor : ≥ 0.90
Power Efisiensi : $\geq 90\%$

LED TRACK LED LIGHT SERIES



Dimensi

Model	Dimensi	Lebar	Tinggi	Berat
RL10	55mm	90mm	140mm	250gram
RL15	100mm	135mm	210mm	610gram
RL30	100mm	160mm	185mm	620gram

- Tegangan : 70 ~ 285 VAC
- Daya : 10W, 15W, 30W
- Model : RL10, RL15, RL30
- Color : 2700 ~ 3000K (WarmWhite)
6000 ~ 6500K (White)
- Frekuensi : 50 ~ 60 Hz
- Power Factor : ≥ 0.90
- Power Efisiensi : $\geq 90\%$
- LED Efisiensi : ≥ 120 lumens/watt
- Beam Angel : $\geq 360^\circ$
- LED Lifetime : 50.000 jam



Explosion Proof T8

- Tegangan : 70 ~ 285 VAC
- Daya : 18W (1 Lampu T8), 36 (2 Lampu T8)
- Model : EP-TX 120 18W, EP-TX120 36W
- Color : 2700 ~ 3000K (WarmWhite)
6000 ~ 6500K (White)
- Frekuensi : 50~60 Hz
- Power Factor : ≥ 0.95
- Power Efisiensi : $\geq 90\%$
- Led Efisiensi : ≥ 110 Lumens/Watt
- Led Lifetime : 50.000 Jam
- IP : IP 67
- Bahan : Cast Caps Aluminium End, Aluminium Reflektor
- Bahan Lensa : Hardened Glass Borosilicate Tube



Explosion Proof Bulb

- Tegangan : 70 ~ 285 VAC
- Daya : 15W (1 Lampu Bulb), 36 (1 Lampu Corn)
- Model : EP-BX 15W, EP-BX 36W
- Color : 2700 ~ 3000K (WarmWhite)
6000 ~ 6500K (White)
- Frekuensi : 50~60 Hz
- Power Factor : ≥ 0.95
- Power Efisiensi : $\geq 90\%$
- Led Efisiensi : ≥ 110 Lumens/Watt
- Led Lifetime : 50.000 Jam
- IP : IP 67
- Bahan : Cast Caps Aluminium End, Aluminium Reflektor
- Bahan Lensa : Hardened Glass Borosilicate Tube



Dimensi

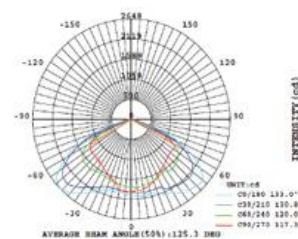
Model	Dimensi	Tinggi	Panjang	Berat
EP-TX 120 18W	95mm	-	1295mm	1.795Gram
EP-TX 120 36W	130mm	-	1285mm	3.135Gram
EP-BX 15W	120mm	262mm	-	1.050Gram
EP-BX 36W	215mm	350mm	-	2.250Gram

Lampu Sorot

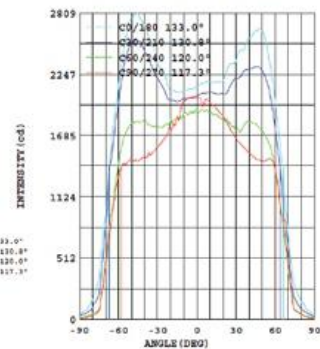
- Tegangan : 70 ~ 285 VAC
- Daya : 10W, 25W, 50W
- Model : F10, F25, F50
- Frekuensi : 50 ~ 60 Hz
- Power Factor : ≥ 0.90
- Power Efisiensi : $\geq 90\%$
- LED Efisiensi : ≥ 120 lumens/watt
- Beam Angel : $\geq 120^\circ$
- LED Lifetime : 50.000 jam
- Material : Alumunium Alloy
- IP Rating : IP65



LUMINOUS INTENSITY DISTRIBUTION



LUMINOUS INTENSITY DISTRIBUTION



Flood Light

- Tegangan : 70 ~ 285 VAC
9 ~ 24 VDC (Solar Panel Enabled)
- Daya : 20W, 30W, 50W, 100W, 150W, 200W
- Model : SQF20, SQF30, SQF50, SQF100
SQF150, SQF200
- Frekuensi : 50 ~ 60 Hz
- Power Factor : ≥ 0.90
- Power Efisiensi : $\geq 90\%$
- LED Efisiensi : ≥ 120 lumens/watt
- Beam Angel : $\geq 120^\circ$
- LED Lifetime : 50.000 jam
- Material : Alumunium Alloy
- IP Rating : IP65



Flood Light

- Tegangan : 70 ~ 285 VAC
9 ~ 24 VDC (Solar Panel Enabled)
- Daya : 50W, 100W, 150W
- Model : SF50, SF100, SF150
- Frekuensi : 50 ~ 60 Hz
- Power Factor : ≥ 0.90
- Power Efisiensi : $\geq 90\%$
- LED Efisiensi : ≥ 120 lumens/watt
- Beam Angel : $\geq 120^\circ$
- LED Lifetime : 50.000 jam
- Material : Alumunium Alloy
- IP Rating : IP65

Flood Light Module

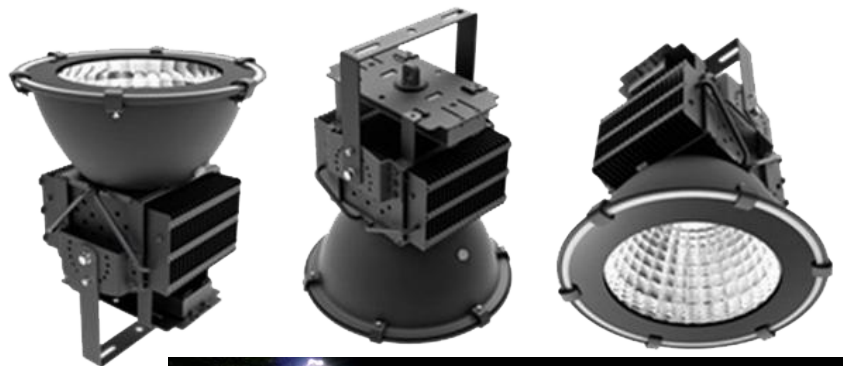
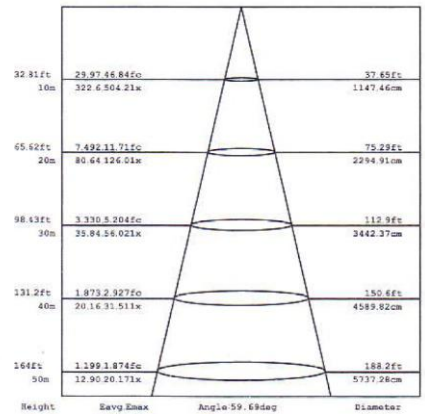
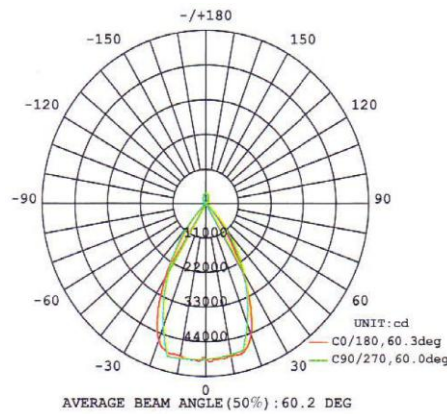
- Tegangan : 70 ~ 285 VAC
9 ~ 24 VDC (Solar Panel Enabled)
- Daya : 50W, 100W, 150W, 200W
- Model : SFM50, SFM100, SFM150, SFM200
- Frekuensi : 50 ~ 60 Hz
- Power Factor : ≥ 0.90
- Power Efisiensi : $\geq 90\%$
- LED Efisiensi : ≥ 120 lumens/watt
- Beam Angel : $\geq 120^\circ$
- LED Lifetime : 50.000 jam
- Material : Alumunium Alloy
- IP Rating : IP65





Flood Light

- Tegangan : 70 ~ 285 VAC
- Daya : 500W, 1000W
- Frekuensi : 50 ~ 60 Hz
- Power Factor : ≥ 0.90
- Power Efisiensi : $\geq 90\%$
- LED Efisiensi : ≥ 120 lumens/watt
- Beam Angel : 60°
- Model : HP500, HP1000
- LED Lifetime : 50.000 jam
- Material : Alumunium Alloy, Fin Cooling Module, Tempered Glass



Lampu Sorot

- Tegangan : 70 ~ 285 VAC
- Daya : 100W, 200W, 300W, 500W
- Frekuensi : 50 ~ 60 Hz
- Power Factor : ≥ 0.90
- Power Efisiensi : $\geq 90\%$
- LED Efisiensi : ≥ 120 lumens/watt
- Beam Angel : 60°
- Model : F100, F200, F300, F500
- LED Lifetime : 50.000 jam
- Material : Alumunium Alloy, Fin Cooling Module, Tempered Glass



HIGHBAY SERIES



High Bay Light Linear Modules

Tegangan	: 70 ~ 285 VAC
Daya	: 100W, 150W, 200W
Model	: SHM100, SHM150 SHM200
Frekuensi	: 50 ~ 60 Hz
Power Factor	: ≥ 0.90
Power Efisiensi	: $\geq 90\%$
LED Efisiensi	: ≥ 120 lumens/watt
Beam Angel	: $\geq 110^\circ$
LED Lifetime	: 50.000 jam
Material	: Aluminium Alloy
IP Rating	: IP65



High Bay Light UFO

Tegangan	: 70 ~ 285 VAC
Daya	: 100W, 150W, 200W
Model	: SRU100, SRU150, SRU200
Frekuensi	: 50 ~ 60 Hz
Power Factor	: ≥ 0.90
Power Efisiensi	: $\geq 90\%$
LED Efisiensi	: ≥ 120 lumens/watt
Beam Angel	: $\geq 110^\circ$
LED Lifetime	: 50.000 jam
Material	: Aluminium Alloy
IP Rating	: IP65

High Bay Light Polycarbonate

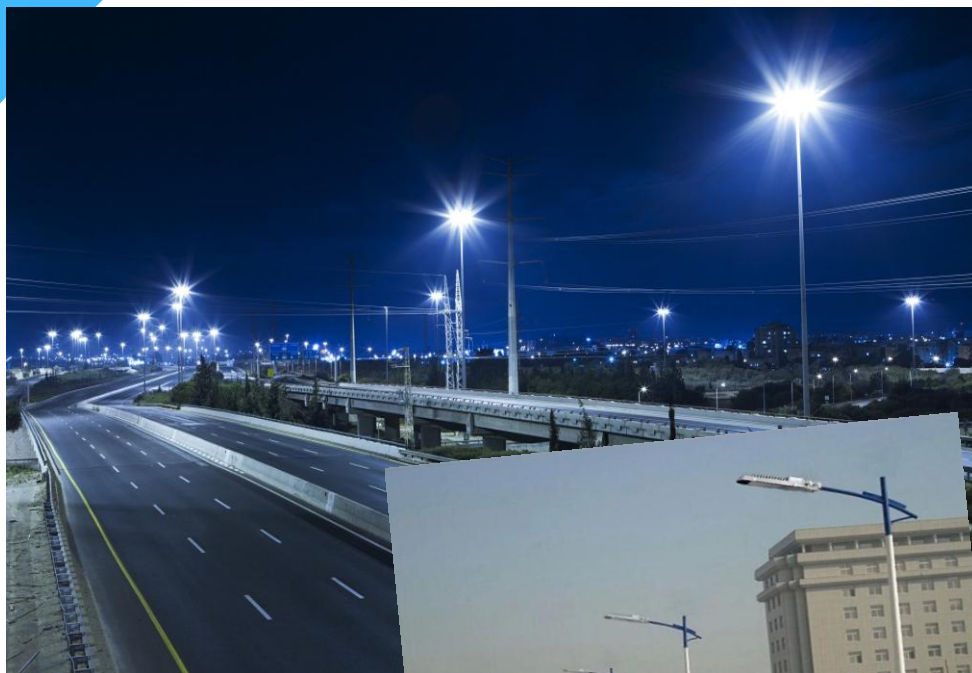
Tegangan	: 70 ~ 285 VAC
Daya	: 150W
Model	: SRP150
Frekuensi	: 50 ~ 60 Hz
Power Factor	: ≥ 0.90
Power Efisiensi	: $\geq 90\%$
LED Efisiensi	: ≥ 120 lumens/watt
Beam Angel	: $\geq 67.5 \sim 120^\circ$
LED Lifetime	: 50.000 jam
Material	: Polycarbonate
IP Rating	: IP65

High Bay Light

Tegangan	: 70 ~ 285 VAC
Daya	: 100W, 150W, 200W
Model	: SR100, SR150, SR200
Frekuensi	: 50 ~ 60 Hz
Power Factor	: ≥ 0.90
Power Efisiensi	: $\geq 90\%$
LED Efisiensi	: ≥ 120 lumens/watt
Beam Angel	: $\geq 110^\circ$
LED Lifetime	: 50.000 jam
Material	: Aluminium Alloy
IP Rating	: IP65



LED STREET LIGHT SERIES



Street Light SNE

- Tegangan : 70 ~ 285 VAC
8 ~ 24 VDC
(Solar Panel Enabled)
- Daya : 30W, 50W, 100W, 150W
- Model : SNE30, SNE60, SNE100
SNE150
- Frekuensi : 50 ~ 60 Hz
- Power Factor : ≥ 0.90
- Power Efisiensi : $\geq 90\%$
- LED Efisiensi : ≥ 120 lumens/watt
- Beam Angel : $\geq 120^\circ$
- LED Lifetime : 50.000 jam
- Material : Aluminium Alloy
- IP Rating : IP65

Street Light SLT

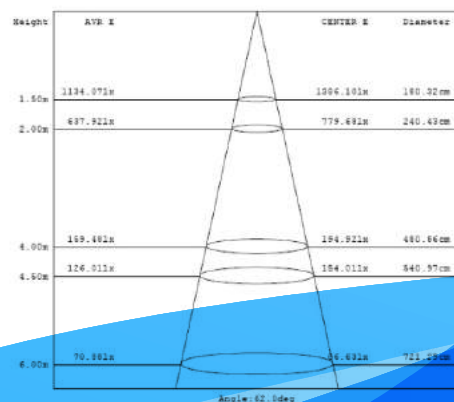
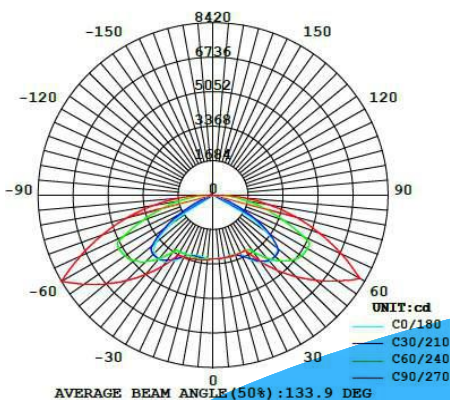
- Tegangan : 70 ~ 285 VAC
8 ~ 24 VDC
(Solar Panel Enabled)
- Daya : 30W, 50W, 100W
- Model : SLT30, SLT50, SLT100
- Frekuensi : 50 ~ 60 Hz
- Power Factor : ≥ 0.90
- Power Efisiensi : $\geq 90\%$
- LED Efisiensi : ≥ 120 lumens/watt
- Beam Angel : $\geq 120^\circ$
- LED Lifetime : 50.000 jam
- Material : Aluminium Alloy
- IP Rating : IP65



STREET LIGHT SERIES



Solar Panel
Enabled



LED STREET LIGHT SERIES



Street Light SSE

- Tegangan : 70 ~ 285 VAC
8 ~ 24 VDC
(Solar Panel Enabled)
- Daya : 40W,60W,100W,150W
- Model : SSE40, SSE60,SSE100
SSE150
- Frekuensi : 50 ~ 60 Hz
- Power Factor : ≥ 0.90
- Power Efisiensi : $\geq 90\%$
- LED Efisiensi : ≥ 120 lumens/watt
- Beam Angel : $\geq 120^\circ$
- LED Lifetime : 50.000 jam
- Material : Aluminium Alloy
- IP Rating : IP65

Street Light LHT

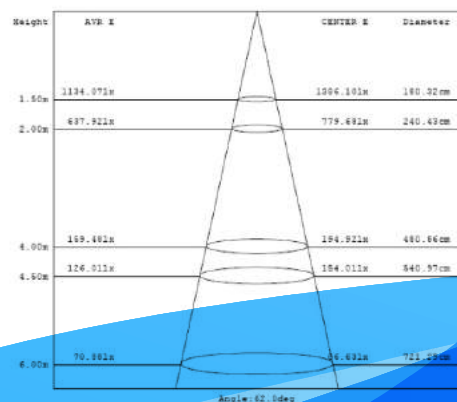
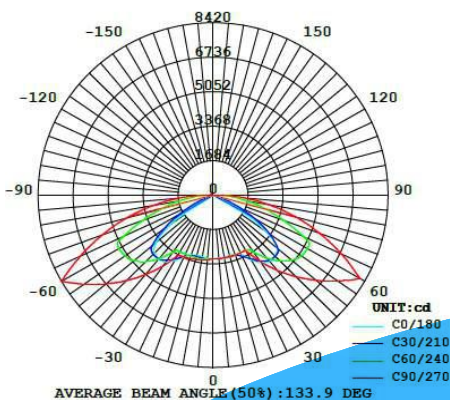
- Tegangan : 70 ~ 285 VAC
8 ~ 24 VDC
(Solar Panel Enabled)
- Daya : 20W
- Model : LHT20
- Frekuensi : 50 ~ 60 Hz
- Power Factor : ≥ 0.90
- Power Efisiensi : $\geq 90\%$
- LED Efisiensi : ≥ 120 lumens/watt
- Beam Angel : $\geq 120^\circ$
- LED Lifetime : 50.000 jam
- Material : Aluminium Alloy
- IP Rating : IP65



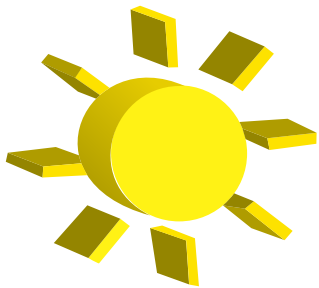
STREET LIGHT SERIES



Solar Panel
Enabled



SENSOR CAHAYA OTOMATIS



SENSOR
CAHAYA OTOMATIS



*Sensor cahaya otomatis
bisa dipasang di
semua lampu LED AC kami*

SENSOR CAHAYA OTOMATIS

“Sensor cahaya otomatis mempunyai keunikan yaitu dapat menyala otomatis saat kondisi sekitar menjadi gelap. Tak hanya otomatis menyala saat gelap, Sensor unik ini bisa mati secara otomatis saat terkena cahaya disiang hari. jadi tidak perlu repot mematikan saklar lampu pada siang dan malam hari.”

Aplikasi:

Dapat digunakan ditempat yang bisa menggunakan saklar dan tidak menggunakan saklar lampu

TEKNOLOGI SENSOR CAHAYA



SOLAR PANEL HYBRID POWER AC/DC

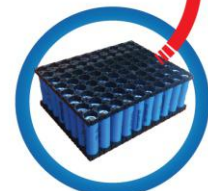


Spesifikasi

- Daya : 60W ~ 150W
- LED AC Efisiensi : ≥ 120 lumens/watt
- Battery : Li-Battery, Tesla Technology
- LED Lifetime : 50.000 jam
- On/Off Control : Build In Microprocessor automatic on/off during normal and emergency
- Sensor : build in motion sensor, on/off during day time and night time



"Hybrid Power adalah dua fungsi ketika listrik mati otomatis menyala (DC) dan bisa menggunakan listrik langsung (AC)"

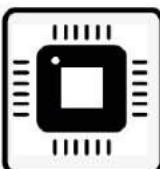


Spesifikasi

- Daya : 60W ~ 150W
- LED Efisiensi AC : ≥ 120 lumens/watt
- Battery : Li-Battery, Tesla Technology
- LED Lifetime : 50.000 jam
- On/Off Control : Build In Microprocessor automatic on/off during normal and emergency
- Sensor : build in motion sensor, on/off during day time and night time



Infrared Control



Timer



Waterprof



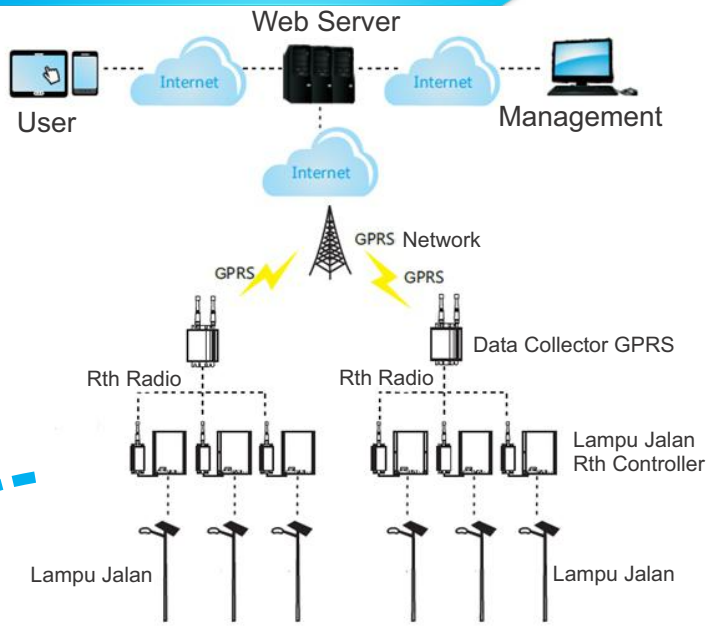
Lithium Battery



Microprocessor Green energy programmable

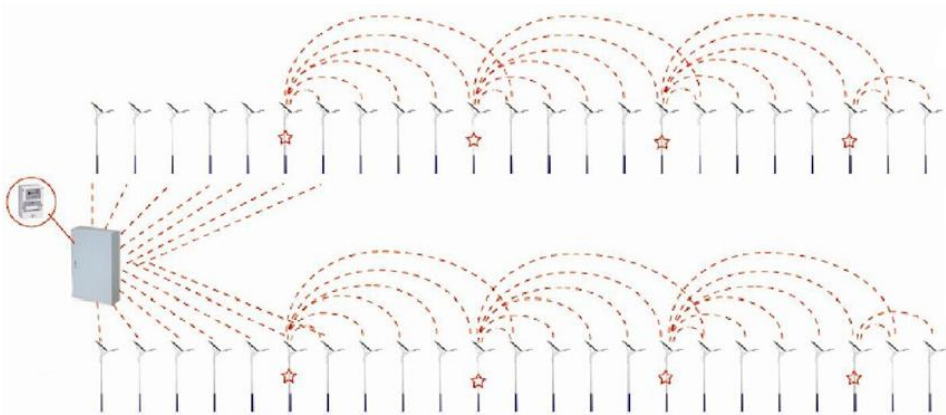


Topologi Smart System

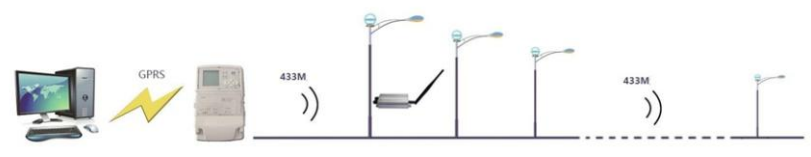
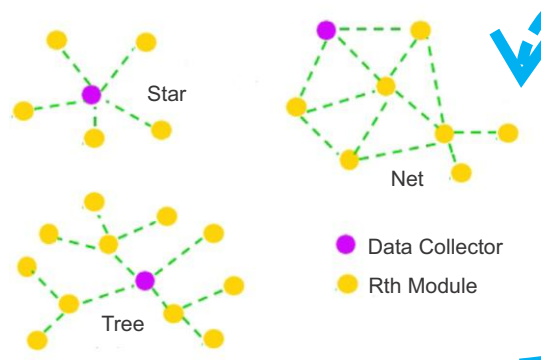


Komunikasi Nirkabel

- * Max 255 Rth Didalam satu data collector
- * Max 7 Segmen
- * Otomatis grouping. Otomatis bypass atau repeat otomatis
- * Network Otomatis Recovery
- * Broadcast dedicated control
- * Jarak Radio Signal 4 - 5 km
- * National wide
- * GPRS Network
- * 2 jalan koneksi
- * Free radio



Macam - Macam Topologi





Obstruction Light



Tegangan : 90 ~ 285 VAC / 9 ~ 30V DC
Baterai/Solar Panel : Lithium Battery (DC Version/Optional)
LED Lifetime : 100.000 jam
IP Rating : IP67
Electronic Protection : Surge > 6.5KV Protection
Ambient temperature : -15 ~ 85 C
Model : AM01
Dimensi : 410 Gram
Berat : Tx Dx L (85x80x105)
Programming Flasing : Infrared

STREET LIGHT ALL IN ONE



Street Light All In One

Daya	: 20W, 40W, 60W, 80W
Power Efisiensi	: $\geq 90\%$
Daya Baterai	: ≥ 12 jam
Beam Angel	: $\geq 120^\circ$
Baterai	: Lithium Battery
IP Rating	: IP65
AC/DC Hybrid (Optional)	

On/Off Control :

Menggunakan Mikroprosesor yang akan Otomatis On/Off pada siang hari dan malam hari.

Sensor :

Menggunakan sensor gerak, bila ada suatu objek bergerak maka LED akan menyala dengan tingkat kecerahan 100%, dan bila tak ada Objek yang bergerak maka LED akan menyala dengan tingkat kecahayaan 30%.

Pengisian Ulang Baterai :

Dengan terik matahari penuh baterai akan terisi penuh dalam waktu 5-6 jam, bila pada saat hujan baterai akan tetap mengisi ulang sampai dengan 20%. Bila baterai penuh akan tetap bekerja selama 3 hari dengan kondisi turun hujan.



Power Supply Outdoor



Tegangan : 230VAC - 5VDC
230VAC - 12VDC
230VAC - 24VDC
Arus : 40A
3A, 5A, 10A, 16A
Model : PR5V40A
PR12V3A, PR12V5A,
PR12V10A, PR24V16A

Indoor / Outdoor

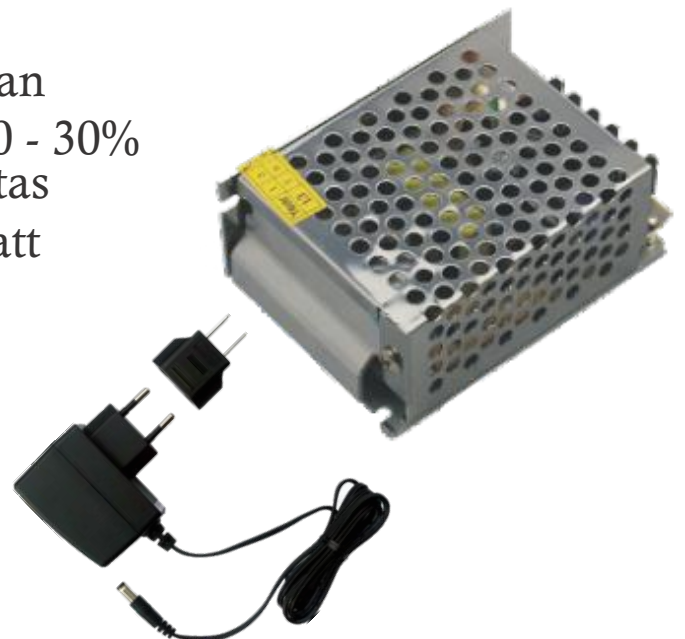
- * Waterproof
- * Lem Injection

Power Supply Indoor

Dimmable Switch



Tegangan
230VAC 20 - 30%
Kapasitas
200 Watt



LIGHT+

THE SOLUTION OF LED

ADVERTISING SERIES





LED Neon Box Indoor

Power Supply : 230VAC - 5VDC
Single Color : LED Power 0.3W/LED
Full Colors : LED Power 0.8W/LED
Diameter 12mm/LED
1 Controller 2048 LED

IP65

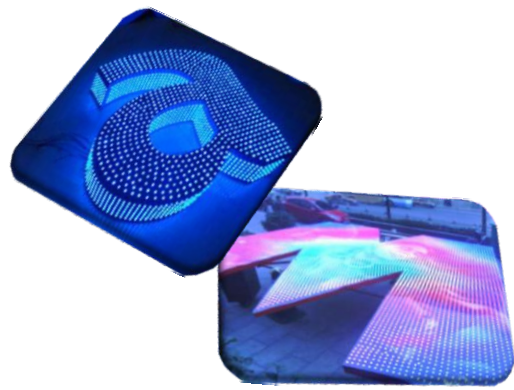


ADVERTISING SERIES

Running Text

Tegangan : 230VAC
Model : P3.75/P10 Satu Warna
P3.75/P10 Tiga Warna
P10 Semua warna
Aplikasi : Indoor / Outdoor
Dimensi : Custom Made
Optional : WIFI, GPRS, USB

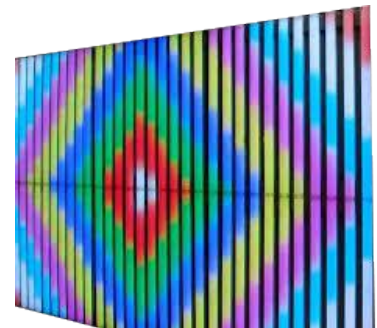
Adzan Waktu Shalat Otomatis



Exposed LED

Power Supply : 230VAC - 5VDC
Single Color : LED Power 0.3W/LED
Diameter 8mm/LED
Full Colors : LED Power 0.8W/LED
Diameter 12mm/LED
1 Controller 2048 LED

IP65



Flourescent Tubes

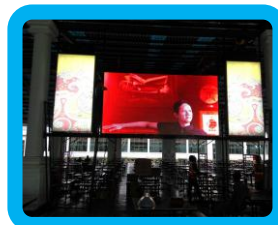
Power Supply 230VAC - 24VDC
Power Max. 9W / Tube
1 Controller 340 Tube
1 Tube 5 x 100 cm
IP65

Videotron

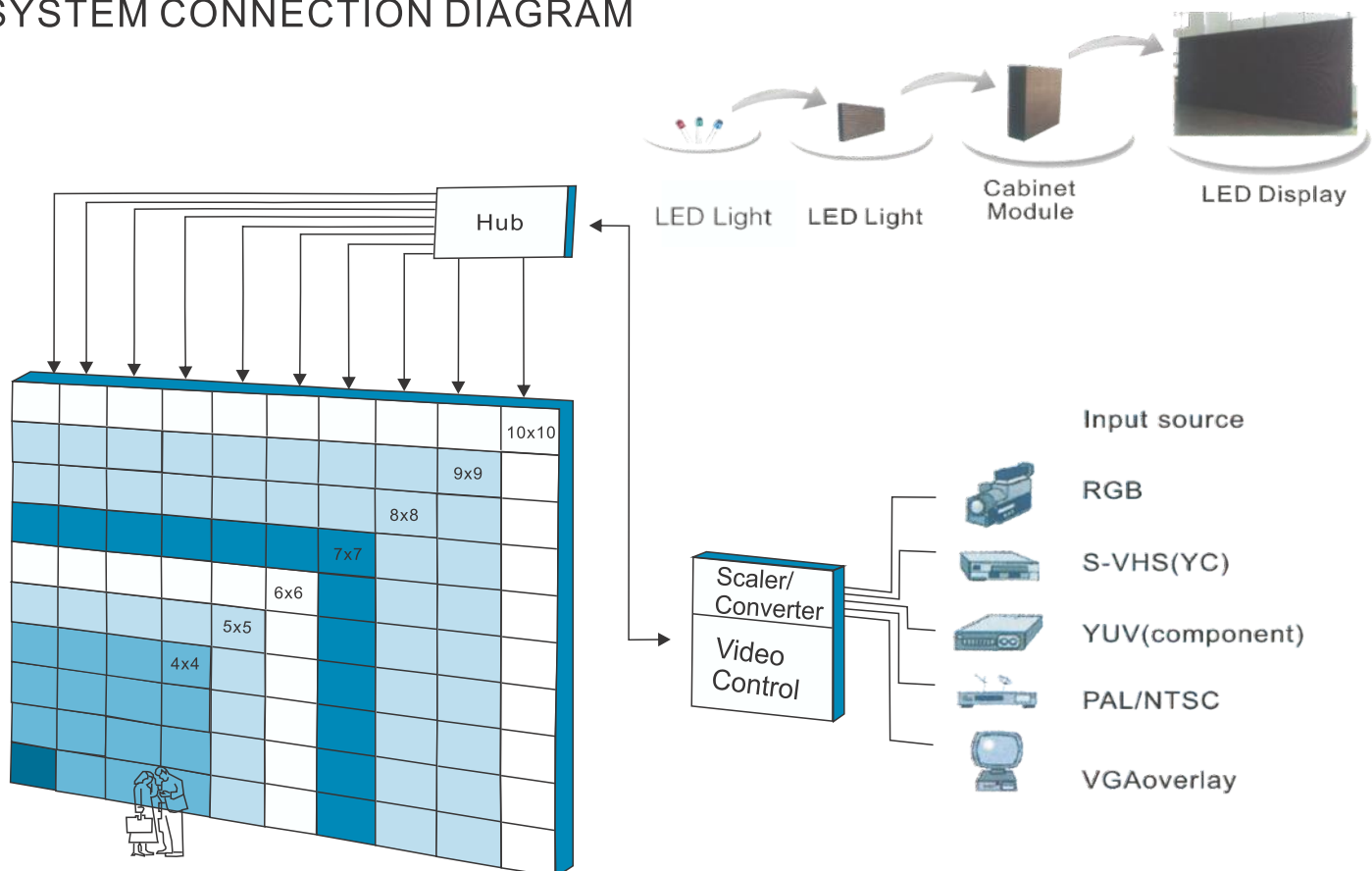
Power Supply 230VAC - 5VDC

P3 (Videotron Indoor)

P10 (Videotron Outdoor)



SYSTEM CONNECTION DIAGRAM





KAN PT QUALIS INDONESIA
 Address: Jl. Pajajaran No. 17 Desa Gandasari Kec. Jatiwang, Tangerang, Banten 15137, Indonesia
 Phone: (021) 5562383 - 5562386 Fax: (021) 5562489

CERTIFICATE OF COMPLIANCE
Sertifikat Kesesuaian

Certificate No.: QI-18/12/0437
 Nomor Sertifikat: Issued date: 10 January 2019
 Diterbitkan tanggal:

TESTING OBJECT
 Deskripsi Sampel: : LED Street Light
TYPE
 Jenis: : LM 120
Specification
 Spesifikasi: : 120W
Brand
 Merek: : LIGHT+
TESTED FOR
 Diuji untuk: : PT. SURYA CITRA TEKNIK CEMERLANG
OFFICE ADDRESS
 Alamat Kantor: : Jl. Kemuning RT.005 RW.005 Bojong Menteng, Rawa Lumbu, Kota Bekasi, Jawa Bekasi 17117
DATE OF TEST
 Tanggal uji: : 07 January 2019
TEST STANDARD
 Metode uji: : IEC 62471, SNI IEC 60598-1

The EUT described above has been tested by laboratory and found in compliance with the standard IEC 62471, SNI IEC 60598-1. The certificate applies only the object tested.
 Objek uji yang diuraikan diatas telah diuji oleh laboratorium dan ditemukan kesesuaian dengan standar IEC 62471, SNI IEC 60598-1. Sertifikat ini hanya berlaku untuk objek yang diuji.

UV Radiation & Blue Light Hazard
 Referring to test report no.: QI-18/12/0437
 Berdasarkan laporan pengujian nomor: QI-18/12/0437

Tangerang, 10 January 2019
 Approved by:
 Rini Saferdi
 Technical Manager Lab.

Valid until: 10 January 2022
 Berlaku hingga: 10 Januari 2022

This certificate is used as proof as the related standard is valid.
 Sertifikat ini berlaku sebagai pembuktian standar uji terkait sesuai berlaku.

Independent test laboratory accredited SNI ISO/IEC 17025:2005 (S/NV) IEC 17025:2005
 Laboratorium uji independen yang terakreditasi SNI ISO/IEC 17025:2005 (S/NV) IEC 17025:2005

Do not copy this certificate without permission in writing from PT. Qualis Indonesia Laboratory
 Dilarang menyalin/membagikan sertifikat ini tanpa izin tertulis dari Laboratorium PT. Qualis Indonesia

KAN PT QUALIS INDONESIA
 Address: Jl. Pajajaran No. 17 Desa Gandasari Kec. Jatiwang, Tangerang, Banten 15137, Indonesia
 Phone: (021) 5562383 - 5562386 Fax: (021) 5562489

CERTIFICATE OF COMPLIANCE
Sertifikat Kesesuaian

Certificate No.: QI-18/12/0205
 Nomor Sertifikat: Issued date: 17 Desember 2018
 Diterbitkan tanggal:

EMC EMISSIONS TEST

Sample Description
 Deskripsi Sampel: : LED Street Light 120 Watt
Model Number
 Nomor Model: : LM120
Specification
 Spesifikasi: : 120 W; 220 V AC; 50 Hz
Brand
 Merek: : LIGHT+
Applicant's Name
 Nama Pemohon: : PT. Surya Citra Teknik Cemerlang
Address of Applicant
 Alamat Pemohon: : Jalan Kemuning RT.005/RW.005, Bojong Menteng, Rawa Lumbu, Kota Bekasi, Jabar 17117

Date of Test
 Tanggal uji: : 12 - 14 Desember 2018
Test Standard
 Metode uji: : CISPR 15:2013+A1:2015

The EUT described above has been tested by laboratory and found in compliance with the standard CISPR 15:2013+A1:2015. The certificate applies only the object tested.
 Objek uji yang diuraikan diatas telah diuji oleh laboratorium dan ditemukan kesesuaian dengan standar CISPR 15:2013+A1:2015. Sertifikat ini hanya berlaku untuk objek yang diuji.

CISPR 15:2013+A1:2015
Radiated Emission (9 kHz – 30 MHz)
Radiated Emission (30 MHz – 300 MHz), CDN Method
Conducted Emission

Referring to test report no.: QI-18/12/0205
 Berdasarkan laporan pengujian nomor: QI-18/12/0205

Tangerang, 17 Desember 2018
 Approved by:
 Rini Saferdi
 Technical Manager Lab.

Valid until: 17 Desember 2021
 Berlaku hingga: 17 Desember 2021

This certificate is used as proof as the related standard is valid.
 Sertifikat ini berlaku sebagai pembuktian standar uji terkait sesuai berlaku.

Independent test laboratory accredited SNI ISO/IEC 17025:2005 (S/NV) IEC 17025:2005
 Laboratorium uji independen yang terakreditasi SNI ISO/IEC 17025:2005 (S/NV) IEC 17025:2005

Do not copy this report without written consent from authorized personnel of PT. Qualis Indonesia
 Dilarang menyalin/membagikan sertifikat ini tanpa izin tertulis dari Laboratorium PT. Qualis Indonesia

KAN PT QUALIS INDONESIA
 Address: Jl. Pajajaran No. 17 Desa Gandasari Kec. Jatiwang, Tangerang, Banten 15137, Indonesia
 Phone: (021) 5562383 - 5562386 Fax: (021) 5562489

CERTIFICATE OF COMPLIANCE
Sertifikat Kesesuaian

Certificate No.: QI-18/09/0416
 Nomor Sertifikat: Issued date: 22 October 2018
 Diterbitkan tanggal:

TESTING OBJECT
 Deskripsi Sampel: : LED Street Light
TYPE
 Jenis: : Light + LM 120W
Specification
 Spesifikasi: : 120W ; 220V AC ; 50Hz
Brand
 Merek: : SURYA CITRA TEKNIK CEMERLANG
TESTED FOR
 Diuji untuk: : PT. SURYA CITRA TEKNIK CEMERLANG
OFFICE ADDRESS
 Alamat Kantor: : Jl. Kemuning RT.005 RW.005 Bojong Menteng, Rawa Lumbu, Kota Bekasi, Jawa Bekasi 17117
DATE OF TEST
 Tanggal uji: : 16 - 17 October 2018
TEST STANDARD
 Metode uji: : IEC 60529:2001-02

The EUT described above has been tested by laboratory and found in compliance with the standard IEC 60529:2001-02. The certificate applies only the object tested.
 Objek uji yang diuraikan diatas telah diuji oleh laboratorium dan ditemukan kesesuaian dengan standar IEC 60529:2001-02. Sertifikat ini hanya berlaku untuk objek yang diuji.

Degrees of protection IP65
 Referring to test report no.: QI-18/09/0416
 Berdasarkan laporan pengujian nomor: QI-18/09/0416

Tangerang, 22 October 2018
 Approved by:
 Rini Saferdi
 Technical Manager Lab.

Valid until: 21 October 2021
 Berlaku hingga: 21 Oktober 2021

This certificate is used as proof as the related standard is valid.
 Sertifikat ini berlaku sebagai pembuktian standar uji terkait sesuai berlaku.

Independent test laboratory accredited SNI ISO/IEC 17025:2005 (S/NV) IEC 17025:2005
 Laboratorium uji independen yang terakreditasi SNI ISO/IEC 17025:2005 (S/NV) IEC 17025:2005

Do not copy this certificate without permission in writing from PT. Qualis Indonesia Laboratory
 Dilarang menyalin/membagikan sertifikat ini tanpa izin tertulis dari Laboratorium PT. Qualis Indonesia

KAN PT QUALIS INDONESIA
 Address: Jl. Pajajaran No. 17 Desa Gandasari Kec. Jatiwang, Tangerang, Banten 15137, Indonesia
 Phone: (021) 5562383 - 5562386 Fax: (021) 5562489

CERTIFICATE OF COMPLIANCE
Sertifikat Kesesuaian

Certificate No.: QI-18/12/0254
 Nomor Sertifikat: Issued date: 17 Desember 2018
 Diterbitkan tanggal:

THD

Sample Description
 Deskripsi Sampel: : LED Street Light 120 Watt
TYPE
 Jenis: : LM120
Model Number
 Nomor Model: : LM120
Specification
 Spesifikasi: : 120 W; 220 V AC; 50 Hz
Brand
 Merek: : LIGHT+
TESTED FOR
 Diuji untuk: : PT. SURYA CITRA TEKNIK CEMERLANG
OFFICE ADDRESS
 Alamat Kantor: : Jl. Kemuning RT.005/RW.005, Bojong Menteng, Rawa Lumbu, Kota Bekasi, Jabar 17119

Date of Test
 Tanggal uji: : 14 Desember 2018
Test Standard
 Metode uji: : IEC 61000-3-2:2014
THD Maximum
 THD Maksimum: : 7.38%
THD Average
 THD Rata-rata: : 7.08%

The EUT described above has been tested by laboratory and found in compliance with the standard IEC 61000-3-2:2014. The certificate applies only the object tested.
 Objek uji yang diuraikan diatas telah diuji oleh laboratorium dan ditemukan kesesuaian dengan standar IEC 61000-3-2:2014. Sertifikat ini hanya berlaku untuk objek yang diuji.

Harmonic Current Emissions Test
IEC 61000-3-2:2014
(THD)

Referring to test report no.: QI-18/12/0254
 Berdasarkan laporan pengujian nomor: QI-18/12/0254

Tangerang, 17 Desember 2018
 Approved by:
 Rini Saferdi
 Technical Manager Lab.

Valid until: 17 Desember 2021
 Berlaku hingga: 17 Desember 2021

This certificate is used as proof as the related standard is valid.
 Sertifikat ini berlaku sebagai pembuktian standar uji terkait sesuai berlaku.

Independent test laboratory accredited SNI ISO/IEC 17025:2005 (S/NV) IEC 17025:2005
 Laboratorium uji independen yang terakreditasi SNI ISO/IEC 17025:2005 (S/NV) IEC 17025:2005

Do not copy this report without written consent from authorized personnel of PT. Qualis Indonesia
 Dilarang menyalin/membagikan sertifikat ini tanpa izin tertulis dari Laboratorium PT. Qualis Indonesia

KAN PT QUALIS INDONESIA
 Address: Jl. Pajajaran No. 17 Desa Gandasari Kec. Jatiwang, Tangerang, Banten 15137, Indonesia
 Phone: (021) 5562383 - 5562386 Fax: (021) 5562489

CERTIFICATE OF COMPLIANCE
Sertifikat Kesesuaian

Certificate No.: QI-18/12/0432
 Nomor Sertifikat: Issued date: 28 December 2018
 Diterbitkan tanggal:

TESTING OBJECT
 Deskripsi Sampel: : LED Street Light
TYPE
 Jenis: : LM 120W
Specification
 Spesifikasi: : 120W ; 220V AC ; 50Hz
Brand
 Merek: : LIGHT+
TESTED FOR
 Diuji untuk: : PT. SURYA CITRA TEKNIK CEMERLANG
OFFICE ADDRESS
 Alamat Kantor: : Jl. Kemuning RT.005 RW.005, Bojong Menteng, Rawa Lumbu, Kota Bekasi, Jawa Barat 17117 - Indonesia

DATE OF TEST
 Tanggal uji: : 26 December 2018
TEST STANDARD
 Metode uji: : IES LM 79-08

The EUT described above has been tested by laboratory and found in compliance with the standard IES LM 79-08. The certificate applies only the object tested.
 Objek uji yang diuraikan diatas telah diuji oleh laboratorium dan ditemukan kesesuaian dengan standar IES LM 79-08. Sertifikat ini hanya berlaku untuk objek yang diuji.

Photometric measurement - Goniophotometer

Referring to test report no.: QI-18/12/0432
 Berdasarkan laporan pengujian nomor: QI-18/12/0432

Tangerang, 28 December 2018
 Approved by:
 Rini Saferdi
 Technical Manager Lab.

Valid until: 17 Desember 2021
 Berlaku hingga: 17 Desember 2021

This certificate is used as proof as the related standard is valid.
 Sertifikat ini berlaku sebagai pembuktian standar uji terkait sesuai berlaku.

Independent test laboratory accredited SNI ISO/IEC 17025:2005 (S/NV) IEC 17025:2005
 Laboratorium uji independen yang terakreditasi SNI ISO/IEC 17025:2005 (S/NV) IEC 17025:2005

Do not copy this certificate without permission in writing from PT. Qualis Indonesia Laboratory
 Dilarang menyalin/membagikan sertifikat ini tanpa izin tertulis dari Laboratorium PT. Qualis Indonesia

KAN PT QUALIS INDONESIA
 Address: Jl. Pajajaran No. 17 Desa Gandasari Kec. Jatiwang, Tangerang, Banten 15137, Indonesia
 Phone: (021) 5562383 - 5562386 Fax: (021) 5562489

TEST REPORT

Work Order No.: WO/2018090822 Test Report No.: QI-18/09/0416

Application's data
 Name: : PT SURYA CITRA TEKNIK CEMERLANG
 Address: : Jl. Kemuning RT.005 RW.005 Bojong Menteng, Rawa Lumbu, Kota Bekasi, Jawa Barat 17117
 Reference No.: : -

Test object
 Name of product: : LED Street Light
 Type: : LM 120W
 Specification: : 120W ; 220V AC ; 50Hz
 Serial No.: : -
 Brand: : Light+
 Color: : Grey (Luminaires)
 Dimension (L x W x H): : -
 Sample quantity: : 1 unit
 Index protection (IP): : IP65
 Sample reception date: : 21 September 2018
 Date of testing: : 18 October 2018
 Tested by: : PT. QUALIS INDONESIA

General statement
 a. The submitted samples are not drawn by the laboratory
 b. The test report applies only to the object tested
 c. Measuring equipment (page 1)
 d. Specification/Standard document: SNI IEC 60598-1:2016, IEC 62362:2002

Conclusion

Performance Test	Safety Test	Energy Saving Lamp Label
-	Passed	-

Note:

Base on the result evaluation and comparing to the standard Specification the test item is **COMPLY**

FILE: QI-18/09/0416
 Do not copy this report without permission in writing from PT. Qualis Indonesia Laboratory
 Dilarang menyalin/membagikan sertifikat ini tanpa izin tertulis dari Laboratorium PT. Qualis Indonesia
 Page 1
 Doc. No.: TRQ-LAB-QAP-009 Rev.: 01 Effective date: July 05, 2017

KORINDO

KORINDO GROUP

ASPEX

PT. Aspex Kumbong

HANDSOME

textile

HANSOLL

textile

DHG.

DAEHAN GLOBAL



INDORAMA



Alfamart
Belanja puas, harga pas



SENAYAN CITY

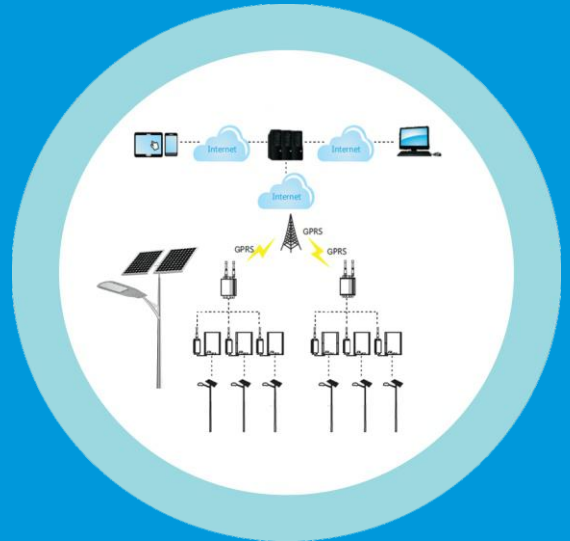


LIGHT+

SOLAR PANEL SOLUTIONS



**SOLAR PANEL
ALL IN ONE
STREET LIGHT
HYBRID POWER AC/DC**



**SOLAR PANEL
SMART SYSTEM
STREET LIGHT**



**COMBO/EMERGENCY
TEKNOLOGI**



**SOLAR PANEL
HYBRID POWER AC/DC
STREET LIGHT**